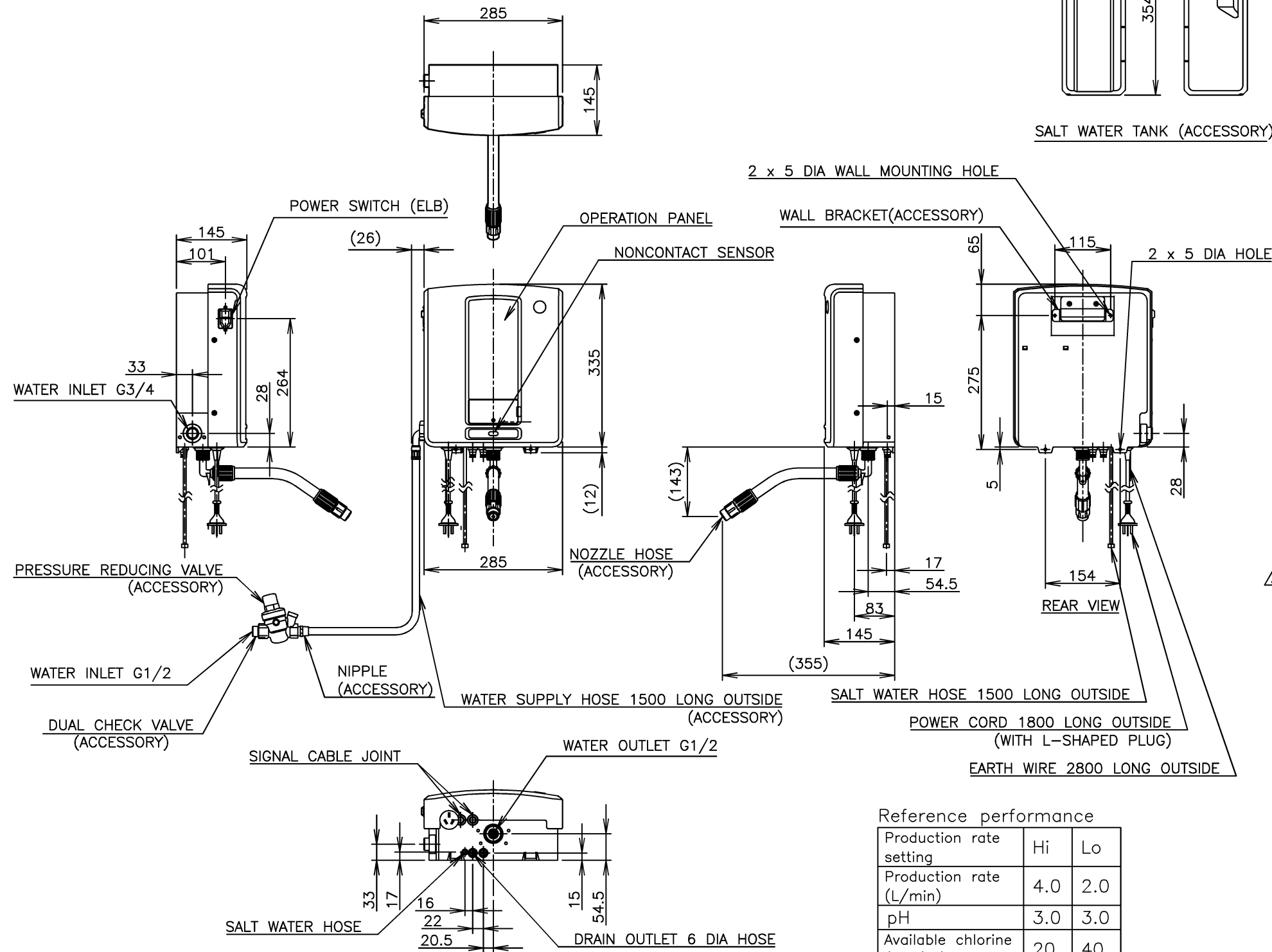


1. Proper grounding is required.
2. The installation site must be clean, dust-free and well ventilated.
3. The external piping must be insulated to prevent condensation.
4. The external piping must have equivalent resistance.
5. The rated properties are based on measurements at ambient temperature 30°C, water temperature 25°C, electrolytic voltage 10V, electrolytic current 13A and production rate 2L/min, by using Toyoake City water.
6. The minimum water supply pressure of 0.15MPa will be required for selection of the "High" production rate.
7. Install the product properly in accordance with the instructions on location, water supply/drain connections and electrical connections stated in the instruction and installation manuals provided. Allow 10mm extra space at the installation site to meet any installation requirements (additional spacing is also required for proper water connections).
8. Product Code: X006-D006



Reference performance

Production rate setting	Hi	Lo
Production rate (L/min)	4.0	2.0
pH	3.0	3.0
Available chlorine (mg/kg)	20	40

ITEM	Hoshizaki Water Electrolyzer	
MODEL	WOX-40WA-EW	
POWER SUPPLY	1 Phase 220 - 240V 50-60Hz 0.6kVA	
AMPERAGE	2.0/2.0A	
ELECTRIC CONSUMPTION	170/170W	
STANDARD PERFORMANCE	PRODUCTION RATE	Sanitizing Water: 4.0L/min or less, Cleaning Water: drained
	AVAILABLE CHLORINE	Sanitizing Water: 5 - 60 mg/kg
	pH	Sanitizing Water: 5.0 or less
OUTSIDE DIMENSIONS	285mm (W) x 145mm (D) x 335mm (H)	
EXTERIOR	ABS Plastic	
INTERIOR	ABS Plastic, Stainless Steel	
ELECTROLYSIS SYSTEM	Membrane Technology	
DILUTE SALT WATER ADJUSTMENT SYSTEM	Direct Electromagnetic Pump Injection Method	
ELECTROLYTIC CURRENT ADJUSTMENT SYSTEM	Automatic Adjustment (with Water Temp Correction)	
PRODUCTION RATE ADJUSTMENT SYSTEM	Automatic Adjustment by Switch Operation (Low/High)	
WATER SUPPLY SYSTEM	Direct Connection to Water Main (Accessory pressure reducing valve required)	
START/STOP	Push Button Switch, Noncontact Sensor	
DISPLAY	Flush, Error, Add Salt Water, Time, Ready	
CONNECTIONS	Water Inlet G3/4 (Pressure Reducing Valve G1/2), Water Outlet G1/2	
CELL POLARITY SWITCHING CONTROL	Timer-Programmable Controller (Protection for power failure)	Microprocessor Controlled
CELL POWER SUPPLY	Constant Voltage DC Power Supply (150W)	
CELL REPLACEMENT TIME	Timer-Programmable Controller (Protection for power failure): 1000 hour	
SALT WATER USAGE CONTROL	Pumping Number Counting	
DILUTE SALT WATER CONCENTRATION	Automatic Adjustment by Electrolytic Voltage and Current	
DESCALING CYCLE	Automatically Starts after Operation for 60 minutes/day	
ELECTRIC CIRCUIT PROTECTION	Earth Leakage Circuit Breaker (with Overcurrent Protector), Earth Wire, Fuse (for PC Board: 5A)	
SAFETY DEVICE PROTECTION	Emergency Stop by Microprocessor Control	
WEIGHT	Approx. 7 kg (10 kg)	
PACKAGE	Carton 520mm (W) x 380mm (D) x 370mm (H)	
CERTIFICATION	RCM, IPX4, WATERMARK	
ACCESSORIES	Salt Water Tank (4L), Cap, Water Supply Hose, Drain Tube, Nozzle Hose, pH Tester, Nipple, Chlorine Tester, Measuring Cup, Gasket, Pressure Reducing Valve 0.15MPa, Anchor Bolt (x 4), Wood Screw (x 4) Wall Bracket, Rubber Dropper, Shower Nozzle, Straight Nozzle, O-ring, Elbow Assy, Dual check valve	
INSTALLATION CONDITIONS	Ambient Temp: 5 - 35°C Water Temp: 5 - 30°C Relative Humidity: Max. 85% (No condensation) Water Supply Pressure: 0.10 - 0.75MPa Voltage Range: Rated Voltage±10% Installation Site: Indoor, Ventilation required Water Supply: Comply with local water requirements Salt: Min. Purity 99%	

*We reserve the right to make changes in specifications and design without prior notice.

HOSHIZAKI WATER ELECTROLYZER WOX-40WA-EW

APPROVED ACHIWA	CHECKED FUJITA	DESIGNED FUJITA	DRAWN MINEZAWA	SCALE 1/10	TRIGONOMETRY
INOUE FUJITA	APPROVED DESIGNED	DATE 2020.09.07	DATE 2010.04.07	DRAWING NO. D06512	SYMBOL 3